

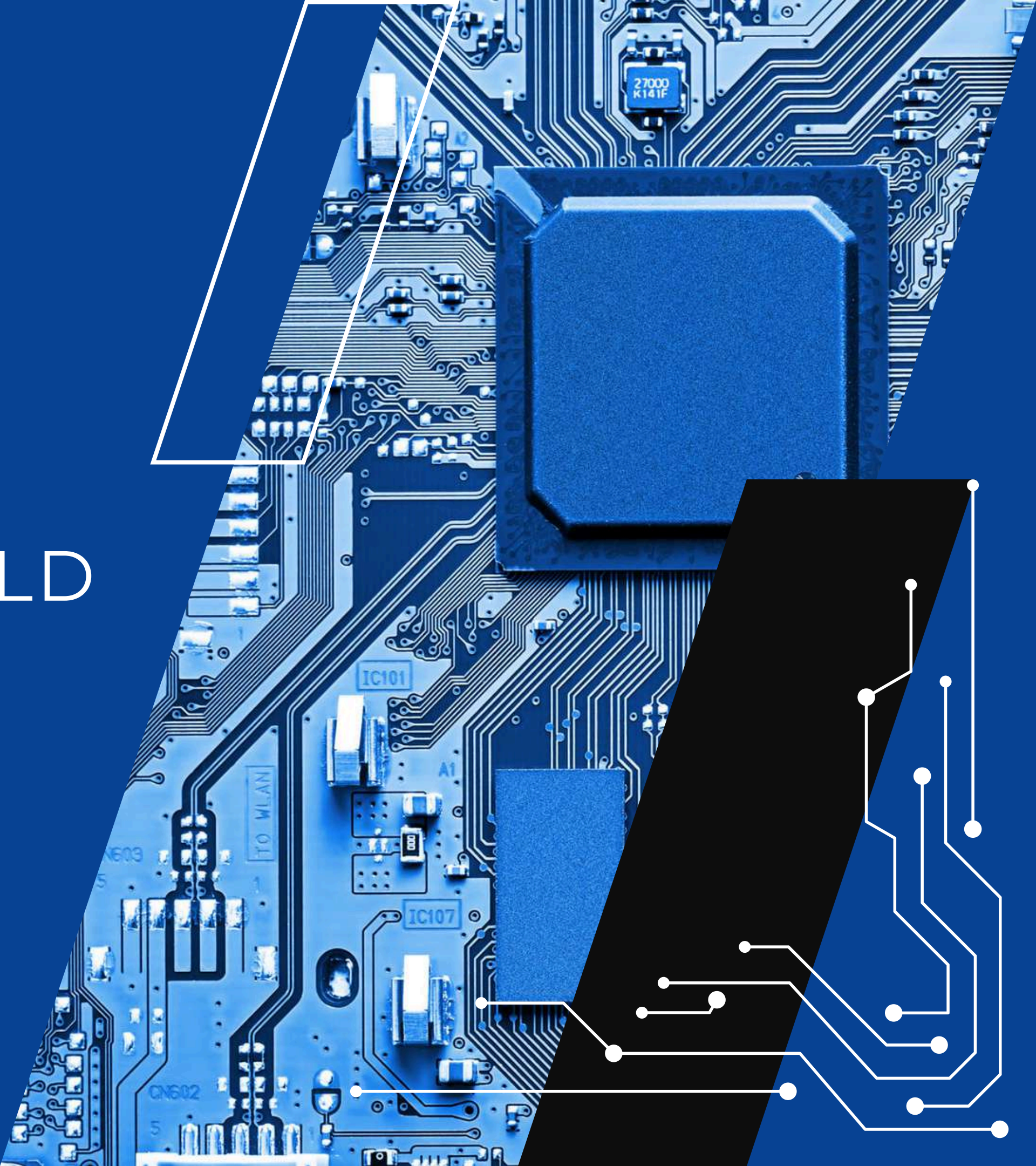


# KTN-TRANS

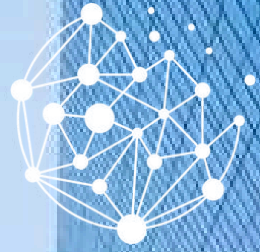
CONNECTING THE WORLD  
WITH PRECISION  
ELECTRONICS

2024

COMPANY PROFILE







KTN-TRANS

# Our Company

We are proud to be among the leading international distributors of electronic components and equipment, serving clients and partners across the globe. Headquartered in the heart of Estonia, our strategic location enables us efficiently to reach and cater to the needs of our diverse global clientele.

Established in 2018, KTN-TRANS has rapidly grown to become a trusted partner for businesses seeking high-quality electronic components and equipment, as well as logistic services. Our commitment to excellence, reliability, and innovation has earned us a distinguished reputation in the industry. Over the years, we have successfully built a robust network of clients and partners, who rely on us for their electronic needs.

Since 2018 our global network of clients grew in various countries: Germany, Austria, Spain, Belgium, Hong Kong, Portugal and others.





# Our Mission

At T KTN-TRANS, our mission is to connect the world with precision electronics. We are dedicated to delivering exceptional service, ensuring timely delivery, and maintaining the highest standards of quality.

Our extensive inventory and strong relationships with top manufacturers allow us to offer a wide range of products, from the latest cutting-edge technology to essential electronic and electromechanical components, power supplies, cables and other machinery equipment for different industries, such as railway and automotive industry, medicine, atomic and renewable energy sector etc.

Whether you are a small enterprise or a large multinational corporation, we provide tailored solutions to meet your specific requirements.



# Our Team



**KTN-TRANS**

Our team of experts is always ready to assist you with your inquiries and provide the technical support you need. Our professional specialists have great experience and qualification in the sphere of electronic components as well as deep knowledge of the market structure, its members and functioning. That's why we exert every effort in the right way and have sincere desire to maximize mutual benefit for each our partner. All these have allowed us to show a significant growth in supply volume and we intend not to stay on what has been achieved.

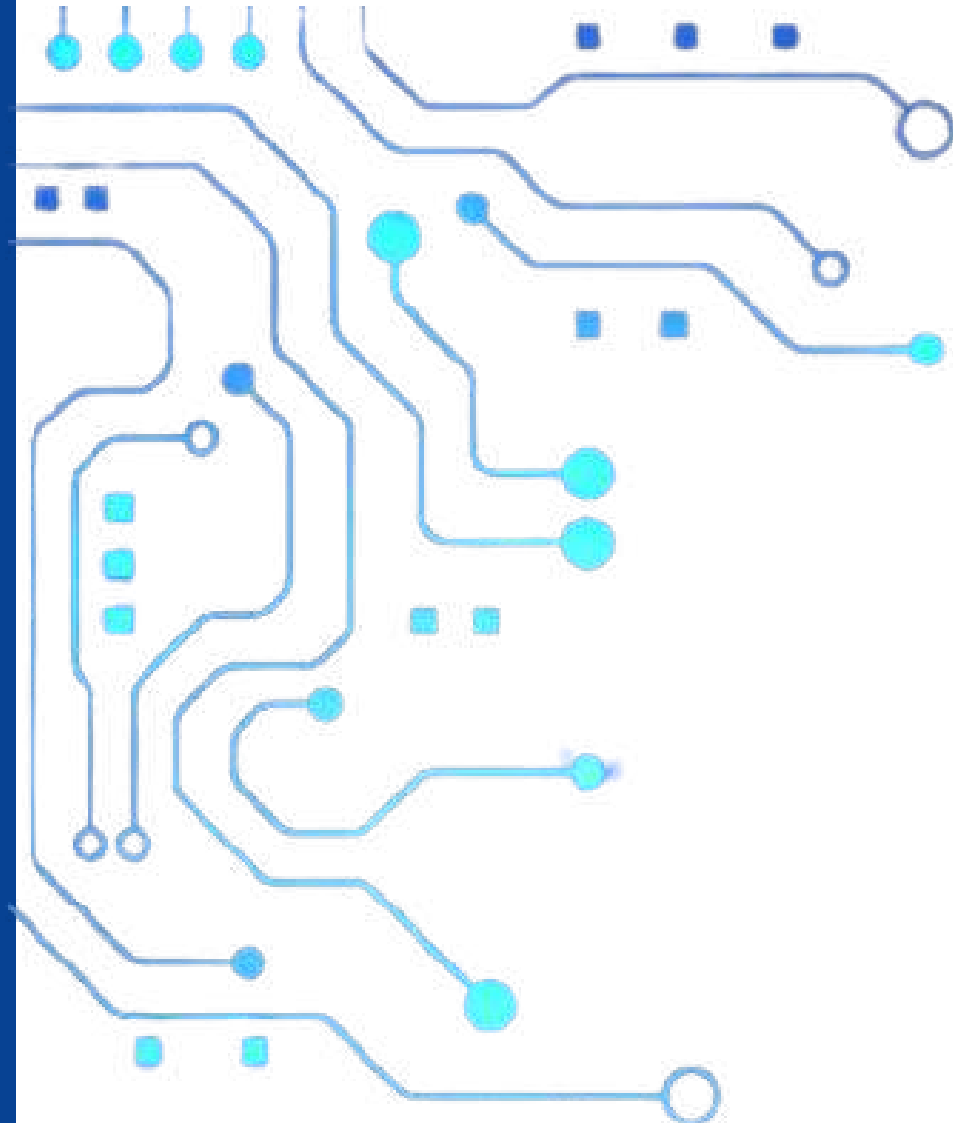






**KTN-TRANS**

# Our Services



## PRODUCTION AND DELIVERY OF MACHINERY AND COMPONENTS

Our extensive network of top-tier manufacturers enables us to produce and deliver high-quality machinery and electronic components tailored to your specific needs. Whether you require specialized equipment or standard components, we ensure precision and reliability in every product we deliver. Our efficient delivery systems guarantee that your orders reach you on time, no matter where you are in the world.



## LOGISTICS

Navigating the complexities of global logistics is our expertise. We provide comprehensive logistics services that cover every aspect of the supply chain, from procurement and transportation to customs clearance and last-mile delivery. Our advanced logistics solutions ensure that your goods are transported safely, securely, and efficiently, minimizing lead times and reducing costs.



## STORAGE AND HANDLING

Our storage facilities are equipped to handle a wide range of electronic components and machinery. We offer secure, climate-controlled environments to preserve the integrity and functionality of production. Our experienced team ensures meticulous handling, inventory management, and order fulfillment to meet your demands accurately and promptly.



## LEASE AND RENT

We understand that flexibility is key to meeting your business needs. That's why we offer flexible lease and rental options for machinery and equipment. Our leasing and rental services are designed to support your operational agility and financial efficiency.





# KTN-TRANS

# Our Products



## MARKING AND IDENTIFICATION TOOLS

To facilitate easy identification and traceability, we supply a range of marking and identification tools, including labels, tags, and engraving equipment.



## POWER SUPPLIES AND CIRCUIT PROTECTION

From AC/DC power supplies to DC/DC converters, our power supply solutions cater to a multitude of needs. We also offer comprehensive circuit protection products, including fuses, circuit breakers, and surge protectors to safeguard your systems.



## DATA AND STORAGE COMPONENTS

Our data and storage solutions include memory modules, hard drives, solid-state drives, and data processing components, ensuring fast and reliable data management for your applications.



## AIR AND LIQUID DELIVERY SYSTEMS

We offer advanced air and liquid delivery systems, including pumps, valves, and actuators, designed for precise control and efficient performance in various industrial and consumer applications.



## MECHATRONIC SYSTEMS

Our mechatronic systems integrate mechanical, electronic, and computing technologies to deliver sophisticated and efficient automation solutions for a wide range of industries.



## BATTERIES

We provide a variety of batteries, from standard alkaline and lithium cells to rechargeable battery packs, suitable for numerous applications requiring reliable power sources.



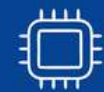
## COMMUNICATION AND NAVIGATION COMPONENTS

We supply cutting-edge communication and navigation components such as antennas, RF modules, GPS receivers, and transceivers, enabling seamless connectivity and precise navigation in your products.



## LIGHTING SEMICONDUCTOR COMPONENTS

Our range of lighting semiconductor components includes LEDs, OLEDs, and related drivers, perfect for both general illumination and specialized lighting applications.



## HOUSING FOR ELECTRONIC COMPONENTS

Our selection of housings and enclosures protects your electronic components from environmental factors, ensuring durability and longevity. We offer solutions for both standard and custom applications.



## POWER COMPONENTS AND MODULES

Our selection of power components and modules ensures robust and efficient power management in your applications. We offer a variety of power transistors, rectifiers, and power modules designed for high performance and reliability.



## ELECTROMECHANICAL COMPONENTS

We provide a wide range of electromechanical components, including switches, relays, connectors, and enclosures. These components are critical for the mechanical and electrical interconnections in your devices and systems.



## ACTIVE AND PASSIVE COMPONENTS

Our inventory includes a vast array of active components such as transistors, diodes, and integrated circuits, alongside passive components like resistors, capacitors, and inductors. These fundamental elements are essential for building reliable and efficient electronic circuits.





# KTN-TRANS

# Our Brands

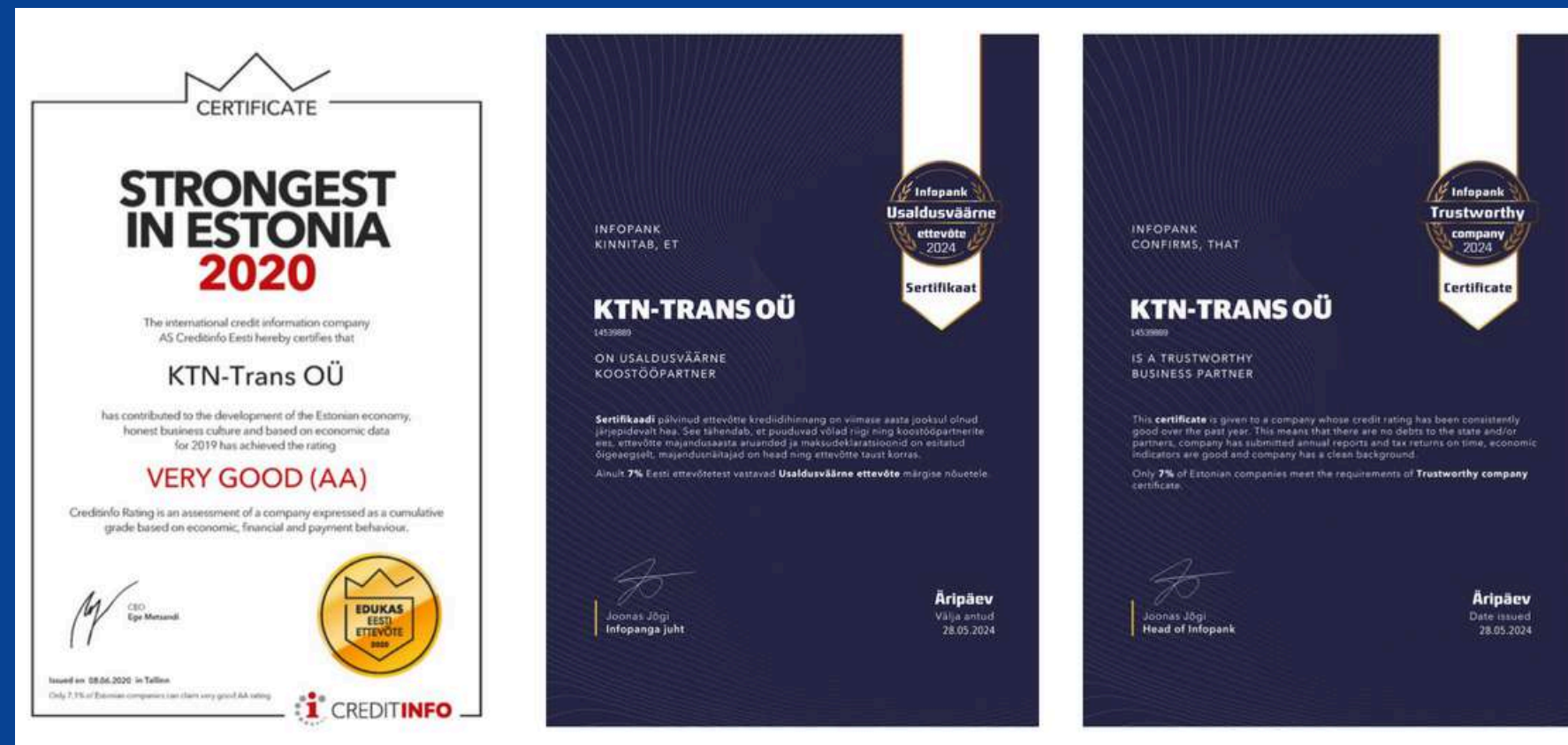




# Our Certificates

We have the certifications that are a testament to our unwavering commitment to quality, safety, and sustainability. We continuously strive to uphold these standards, providing our clients with the confidence that they are partnering with a company that values excellence and responsibility in every aspect of its operations.

KTN-TRANS







KTN-TRANS

# Our Partners

At KTN-Trans, we believe that strong partnerships are the foundation of our success. We are proud to collaborate with some of the most reputable companies in the industry.

As an official distributor of their products, we can offer our clients the highest quality electronic components and equipment available on the market. Our partnerships enable us to uphold our commitment to excellence, reliability, and innovation.



# Our Contacts

At KTN-TRANS, we value our clients and partners and are always here to assist you with your inquiries, orders, and technical support needs. Whether you are looking for specific products, need assistance with your orders, or want to discuss potential partnerships, our team is ready to help.

Wherever you are, feel free to contact us and manage a meeting with us.

Our team would be delighted to meet you and discuss how we can support your business needs and provide you tailored solutions.



## KTN-TRANS

 [www.ktn-trans.ee](http://www.ktn-trans.ee)

 [info@ktn-trans.ee](mailto:info@ktn-trans.ee)

 Suur-Karja 4-4 Tallinn  
10140 Estonia